

# Princess Yachts Princess V53 - V 53



## MAIN DATA

Brand	Princess Yachts
Type	Hard Top
Year Registration	2007
Length	15.93 m
Draft	
Power	2 x 800 Hp
Price	417,000.00 € VAT included Agency fees not included

Model	Princess V53 - V 53
Flag	Italy
Hull Year Built	2006
Beam	4.42 m
Engine	Volvo Penta D12 D - 800
Hours	818
Visible	Adriatic Sea

## TECHNICAL DATA

Fuel Tank	2,200 l
Transmission	Shaft drive
Max Speed	
Rina Expiration	05-2025
Generator	1 x 13 Kw Kw Onan

Water Tank	500 l
Engine Type	Inboard Diesel
Cruising Speed	
Displacement	
Hull Material	Fiber Glass

## HABITABILITY

People on Board	15
Total berths	6
Cabins	3
Baths	2

Interiors	3 x Double King Size, 2 x Toilets
-----------	-----------------------------------

## GENERAL DESCRIPTION

Discover the used Princess V53, a symbol of elegance and luxury at sea. This exclusive vessel is designed for those who want to stand out, offering refined design and superior performance. On board, you'll find every comfort designed for the ultimate in pleasure and elegance: from the air conditioning that can be adjusted in four different zones, perfect for every area of the boat, to the watermaker that provides abundant fresh water for endless showers. In addition, the tender garage integrates functionality and style, facilitating access to the most secluded and picturesque coves. The Princess V53 is not just a boat, but a statement of your unique style. Contact us to find out how you can become an owner of this beautiful boat. The data in this sheet are not contractual.

## Princess Yachts Princess V53 - V 53



### ELECTRONIC TOOLS FOR NAVIGATION

Autopilot (Raymarine - Autohelm series AutoPilot), Chain counter (Quick - CHC 1202 M), Chartplotter (Raymarine - E120), Compass (Danforth - GLOBAL Balance), Co-pilot seat, Electronic engine control (Volvo Penta EVC), GPS (Raymarine - E120), Odometer (Raymarine - E120), Radar, Radar Antenna (Raymarine), Rudder angle indicator (Raymarine - Autohelm series AutoPilot), VHF Radio (Garmin - GHS 11i)

### STAGING AND TECHNICAL

Automatic Bilge Pump, Battery charger (Mastervolt), Bilge Alarm, Bow Thruster (Side Power), Bow Winches (Lewmar), 2 cockpit table, Courtesy Lights, Deck Shower (Caldo freddo), Directional Spotlight, Electric Bilge Pump, Electric Flaps (Lenco), Electric Windlass (Lewmar con barbotin di tonneggio), Engine Alarm (Volvo Penta EVC), Entry door (Scorrevole), Fire Extinguishing System, Flaps Indicators (Lenco), Gangway (Opacmare - Elettro idraulica estensibile e a scomparsa con regolazione alto/basso), Hard top (Apribile elettricamente), Horn, Life Raft, Manual Bilge Pump, Platform (Spiaggetta fissa a poppa), Rollbar, Shorepower connector, swimming ladder, Teak Cockpit, Tender Garage (Tender 3,20 mt Con rulli e verricello alaggio), T-Top, Washbasin in the cockpit, Water harbor connector system, Water pressure pump

### DOMESTIC FACILITIES ONBOARD

12V Outlets, Air Conditioning (Crusair - 4 macchine con regolazione in ogni cabina), 2 Electric Toilet, Interior wooden floor, Inverter (Mastervolt - 24/800W), Warm Water System, Watermaker (Schenker 100 lt/h)

### ENTERTAINMENT

Hi-Fi, Satellite TV antenna, Speakers, TV

### KITCHEN AND APPLIANCES

Burner, Ceramic hot plate (Plastimo), Deck Refrigerator, Dishwasher (Candy), Freezer, Galley, Refrigerator, Winecooler

### UPHOLSTERY

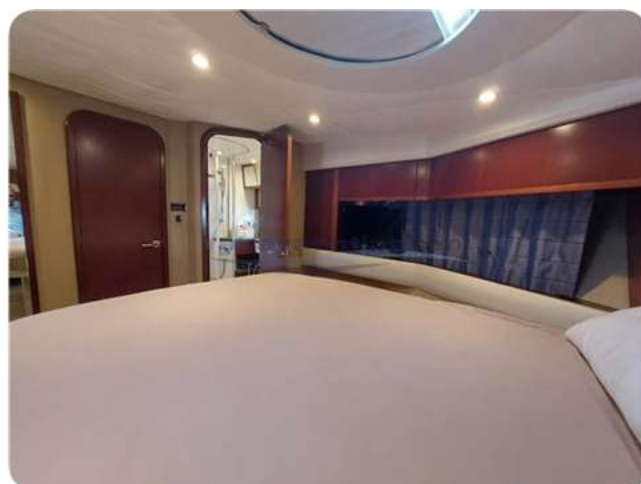
Blackout Curtains, Bow Cushions, Cockpit Cover, Cockpit Cushions, Mosquito nets, Stern Cushions, T-Top Cover, Window Cover



## Princess Yachts Princess V53 - V 53



## Princess Yachts Princess V53 - V 53





## Princess Yachts Princess V53 - V 53

